



GERMANN + FREI AG 



High Capability

# Vertical Light Tester VLT 1200

# Vertical Light Tester VLT 1200



The vertical light testing machine VLT 1200 was developed for maximum machine availability, efficiency. Combined with its easy handling and operation it thus meets the highest requirements of the can making industry. This very compact machine has got 10 heads and is suitable for testing 2-piece can bodies. It detects and ejects cans with pinholes larger than 0.002" as well as split flanges. It is equipped with an Eclipse can body light leak detection system. The VLT 1200 is engineered according to the GERMANN + FREI philosophy. It is designed vertically, very precisely with good access to all parts. This allows you to complete a format change in just a few minutes. Thanks to the vertical can alignment, the machine can be integrated compactly into the production line, significantly reducing transport distances. Further, in standalone machines the cans are exposed to less dust than in a combination machine.

Its essential characteristics are the consistently precise operations and the gentle processing of the can, the compact design, the extremely low-vibration and quiet running as well as the simple handling and safe operation. For further information please see the technical details.





*Customer focus: from the idea to planning and construction with the latest CAD technology ...*



*... up to high-precision machine production with computer-controlled production systems*

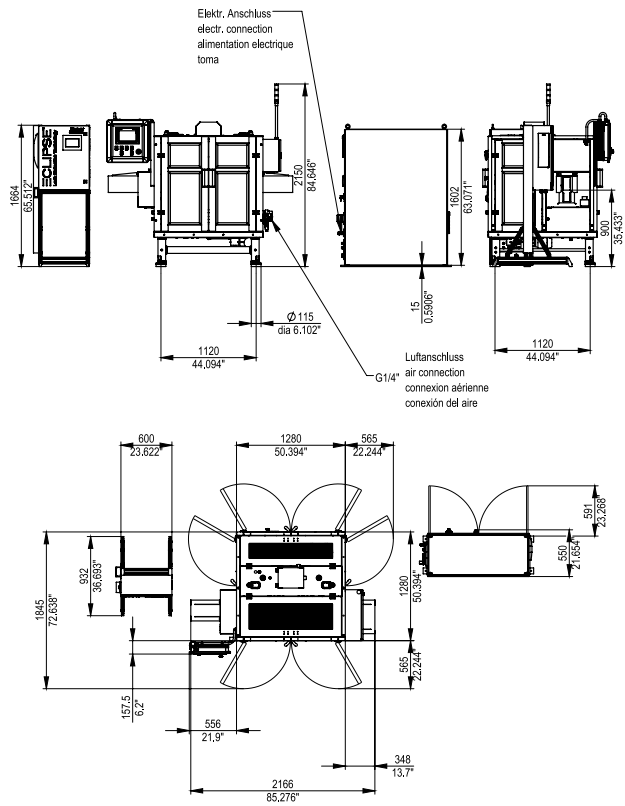


*Simple operation of the PLC via an HMI touch panel*

### Technical details VLT 1200

- Light-based leak detection system with highest performance and sensibility
- High flexibility thanks to automatic height adjustment
- Excellent accessibility
- Minimal maintenance effort thanks to central oil lubrication system
- Highest efficiency and machine reliability
- Electronic monitored machine functions guarantee safe operation
- Stepless electronic speed control
- Designed to detect damaged flanges more reliable
- Remote maintenance
- Declaration of CE-conformity for machine and control

# To Ensure High Precision Manufacturing



Technical data		VLT 1200
Diameter range size	mm/imperial	52-84 / 202-307
Number of seaming stations		10
Cut body height range size	mm/imperial	45-152 / 110-514
Capacity per minute	cans	300-1200
Connected load	kW	4

Subject to alterations



New Ideas to Ensure Success

# Optimum Customer's Benefit through Modular Machine Design



*2-piece can line with combined  
Spin Flanger / Beader and light  
detection machine for up to 120 CPM*

The modular design of the machines from GERMANN + FREI can be combined as desired and covers the entire backend in the manufacturing of 2-piece cans. From flanging to can testing, GERMANN + FREI builds machines that are known for their high reliability and smooth running. The gentle handling of the cans is valued equally by customers in the milk powder and food industries – highest machine efficiency with easy handling.



GERMANN + FREI AG<sup>+</sup>

GERMANN + FREI AG  
Martinsbruggstrasse 92  
CH-9016 St. Gallen  
Switzerland  
Phone +41(0)71 - 282 16 40  
E-Mail [info@germannfrei.ch](mailto:info@germannfrei.ch)  
Web [www.germannfrei.ch](http://www.germannfrei.ch)